



# AMERICAN FLOOR PRODUCTS COMPANY, INC.

AFCO-USA

P.O. BOX 7055 • Gaithersburg, Maryland 20898 -7055 • 301-987-0490 • Fax 301-987-0422

email: sales@afco-usa.com • Web Site: www.afco-usa.com

## INSTALLATION INSTRUCTIONS

### Impact Protection Systems

#### HANDRAILS: **MOJAVE® (WG-2111)**

- Step 1:** Determine top of handrail height and snap a chalk line 3-3/4" below for centerline of mounting hardware, see **fig. 1** (see CAD details on back for all figure references)
- Step 2:** Cut aluminum. All ends must be checked for squareness before assembly. See **fig. 2** and **3** for adjustments to aluminum length at wall returns and outside corners. Mitre aluminum to accommodate inside corners, see **fig. 4**  
*Note: All cuts must be square and deburred*
- Step 3:** Layout aluminum retainer "face up" and mark and drill bracket mounting hole location  
**Mounting holes must be spaced:**
- 32" on center, or less
  - 1-1/2" - 6" from end of retainer at returns and outside corners
  - 3" - 6" from end of retainer at inside corners
  - A minimum of 3" from end of retainer at splices and butt joints
  - To align with metal studs (on metal stud construction) or preferable a horizontal metal stud or plate (by others)
- Note: Use groove in retainer to locate centerline for drilling, see fig. 5*
- Step 4:** Locate and drill bracket mounting holes in wall construction using the aluminum retainer as a template (or by careful measurement). Choice of hardware will dictate hole diameter.
- Step 5:** Slide rubber impact cushion into retainer, see **fig. 7**
- Step 6:** Insert molded accessories into end of retainer, press firmly to insure molded part is seated squarely against the end of the retainer. Drill accessory mounting holes using the accessory as a template, see **fig. 6b**
- Step 7:** Attach returns and outside corners to retainer insuring accessory is seated squarely while tightening. Fasten with 1/4" bolt, flat washer and nylon lok-nut provided.  
*Caution:* Do not use a lock washer, use flat washers only. Always place a flat washer between nut and molded tab. Tighten to 10 ft-lbs maximum torque, see **fig. 6a**
- Step 8:** Mount assembly to wall with the appropriate hardware according to wall condition See step 9 for splicing information  
**Suggested hardware:**  
Drywall: Toggler® brand toggle bolts  
Masonry: Plastic Alligator® insert
- Step 9:** Refer to **fig. 9a** and **9b** for splicing of aluminum retainer on longer handrail lengths
- Drive 5/16" roll pin in place, leave protruding 1/4" to 3/8", see **fig. 9a**
  - Mount retainer containing roll-pin on wall first. Press next retainer into place while twisting back and forth around roll-pin
  - Attach splice plate as shown in **fig. 9b**
- Step 10:** Measure between accessories (corners and returns) and cut both vinyl covers  
*Note: All cuts must be square and deburred*
- Step 11:** Place accent strip in finger groove of rail, ID mark up, see **fig. 8** Snap on the lower vinyl bumper guard
- Step 12:** Layout wooden handrail. Ensure wood will span all aluminum retainer splices  
*Note: All cuts must be square and deburred. Debur using 120 grit sand paper being careful not to damage finish*
- Step 13:** Color the perimeter of all unfinished ends of the wooden handrail using a stain pen or touch-up stain, see **fig. 10**
- Step 14:** Apply a 1/8" bead of construction adhesive (included) to the opposing faces of the wood handrail mounting groove, see **fig. 11**  
*Note: Do not apply adhesive to the top face of the mounting groove or wood will not seat properly on aluminum*  
*Hint: Due to the nature of hardwoods care should be taken to select the straightest pieces of wood for the longest handrail spans*

Step 15: Place wood handrail over the aluminum retainer starting at one end of the span

Step 16: Align wood handrail at all returns, butt joints and corners, clamp if necessary. Clamp wood handrail to retainer on longer spans (or as required) using two wraps of packaging tape (protect wood and plastic finishes with paper). Remove all clamps and tape after adhesive has set.

*Specifications subject to change without notice.*

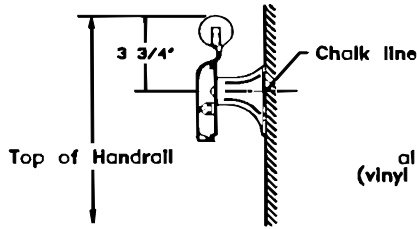


Fig 1

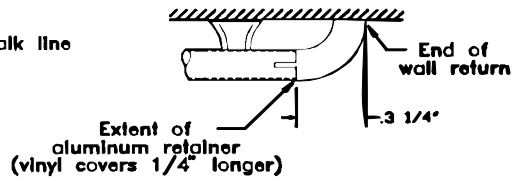


Fig 2

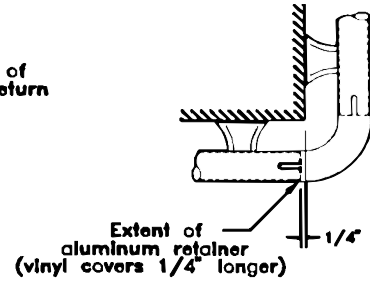


Fig 3

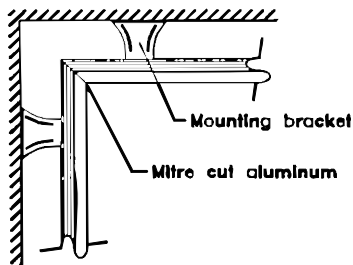


Fig 4

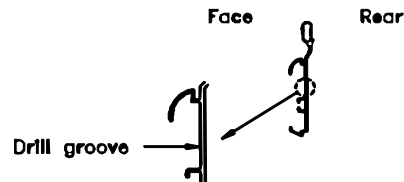


Fig 5

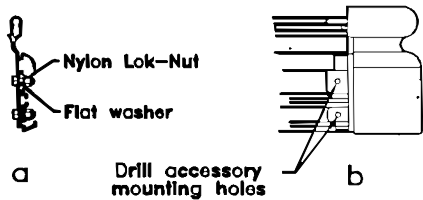


Fig 6



Fig 7

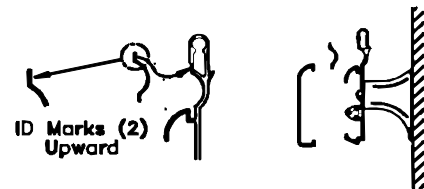


Fig 8

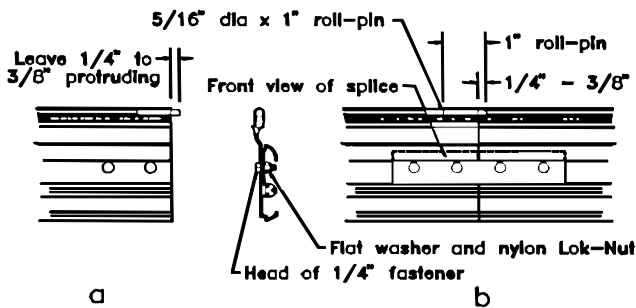


Fig 9

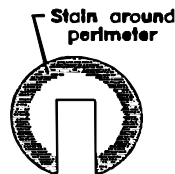


Fig 10

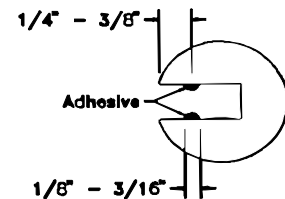


Fig 11